

## Form A reed relay

### RGK54



Electromagnetic power reed relay with one contact for closing. It is meant for switching electric circuit of direct and alternating current with frequency up to 10 kHz in communication devices, telemetry, informatics etc.

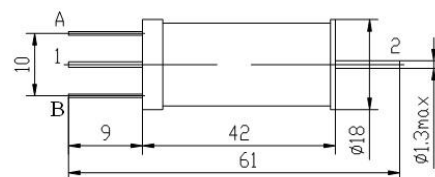
The relay has an open case with drive winding on a special frame and can operate with switching and control equipment.

### Specifications

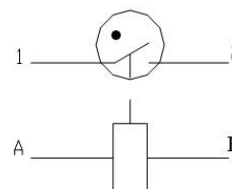
Operating voltage, $\pm 10\%$	V	15
Pull-in voltage, max	V	9,5
Drop-out voltage, min	V	1,2
Winding resistance, $\pm 10\%$	Ohms	1300
Control current (reference value)	mA	12
Switching power, max	W	250
Switching current range	A	0,1 ... 3
Switching voltage range	V	36 ... 250
Resistance, max	Ohms	0,15
Insulation resistance, min	MOhms	200
Breakdown voltage, min	$V_{AC}/V_{DC}$	350/490 500/700
Operate time, max	msec	2,0
Release time, max	msec	2,0
Life (depending on mode conditions)	-	$5 \cdot 10^4 \dots 1 \cdot 10^6$
Sinusoidal vibration (1-500)Hz, max	g	10
Mechanical shock		
• single-shock, duration (10-50)msec	g	20
• multiple-shock, duration (2-15)msec		15
Linear acceleration, max	g	10
Operating temperature range	$^{\circ}C$	-40 ... +85
High humidity at +25 $^{\circ}C$ , max	%	98
Weight, max	g	24

The manufacturer guarantees quality conformance of the relay to engineering specification provided customer complies with storage, transportation, assembly and service conditions.

### Outline drawing



### Electrical schematic circuit



Information could be subject to changes. For details please contact marketing department.

16.09.2011



[www.rmcp.ru](http://www.rmcp.ru)

**JSC "RYAZAN METAL CERAMICS INSTRUMENTATION PLANT"**

Russia, 390027, Ryazan, Novaya street, 51 «B»

**Marketing:** Tel./Fax: (4912) 24-02-34, e-mail: [marketing@rmcp.ru](mailto:marketing@rmcp.ru)

**Sales:** Fax: (4912) 24-02-34, 44-19-70, 44-68-07

