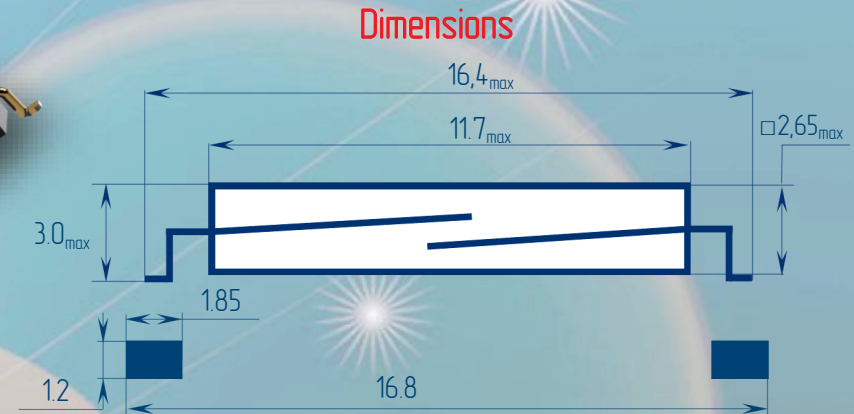
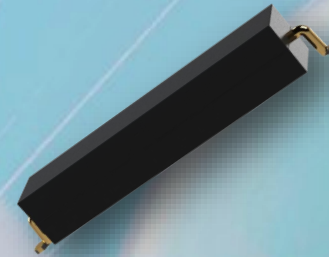


REED SWITCH MKA-10110MS

Reed relays, Security, Limit switching, Telecoms, Office equipment (up to 10kHz)

Switching Carry current, A	0,5	Switching power, W, VA	10
Switching voltage, V	100 (<15AT) 200 (>15AT)	Pull-in range, AT	7...45

Any DC combination of V&A not to exceed the Switching power.



Electrical Data

Pull-in range, AT	7...45
Release range, AT, min	3
Resetting Ratio	0,35...0,9
Breakdown voltage, V, not less	less 15 A more 15 A
AC/DC	130/180 165/230
Contact resistance, Ω	0,15
Operating time including bounce, ms	0,5
Release time including bounce, ms	0,3
Capacitance, pF, not more	0,5
Insulations resistance, G Ω , not less	1
Operation frequency, Hz	400
Switching current frequency, kHz, not more	10
Life expectancy, switching cycles $\times 10^6$	0,1...5

Environmental Data

Contact type	A
Vibration (1...500 Hz), g, not more	10
Resonant frequency, Hz	5000
Shock (1 \pm 0,3) ms, g, not more	150
Weight, g, not more	0,12
Contact material	Ru
Operating temperature, $^{\circ}\text{C}$	-60...125
Humidity, %, not more	98

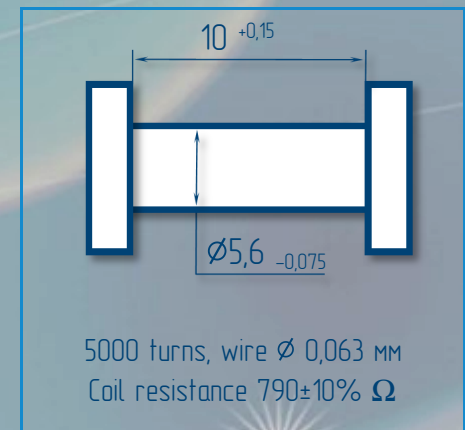
Order information

Delivery of reed switches with formed and/or cropped leads and with narrow pull in ranges is available by agreements.

Certifications



Test coil



RYAZAN METAL CERAMICS INSTRUMENTATION PLANT, JSC

51V, NovayaSt.,390027,Ryazan, Russia www.rmcp.com
Sales: phone +7 (4912) 240-234, fax +7(4912) 240-234 oves@rmcip.ru